

PROLIAD

LED LIGHTING

Light quality:



Color temperature:

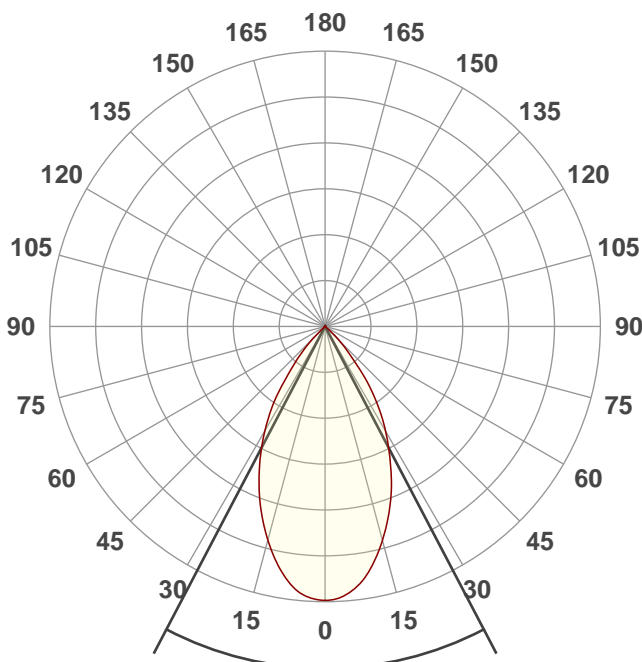


Output: 1718 lm

Peak: 2066 cd

Power: 21,2 W

PF: 0,93



Beam angle

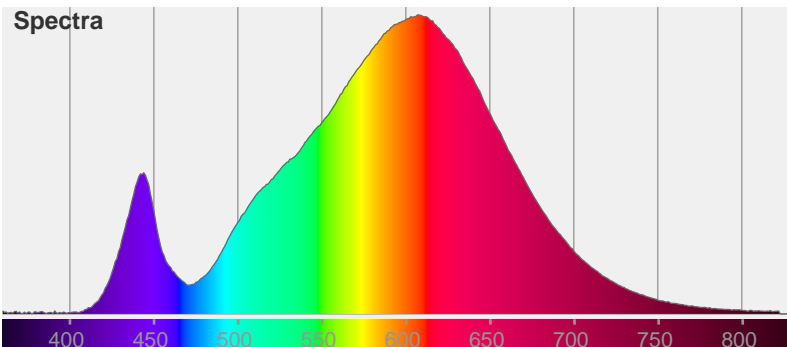
55,3°

Color



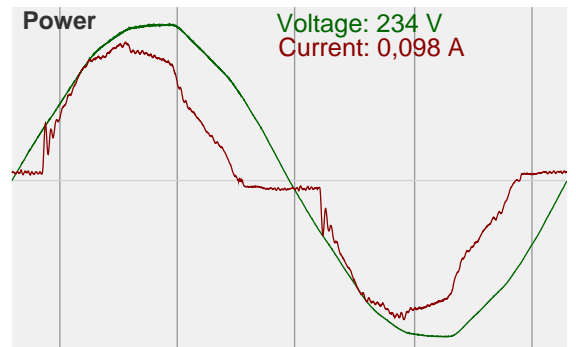
CIE1931
x: 0,447
y: 0,410

Spectra



Power

Voltage: 234 V
Current: 0,098 A

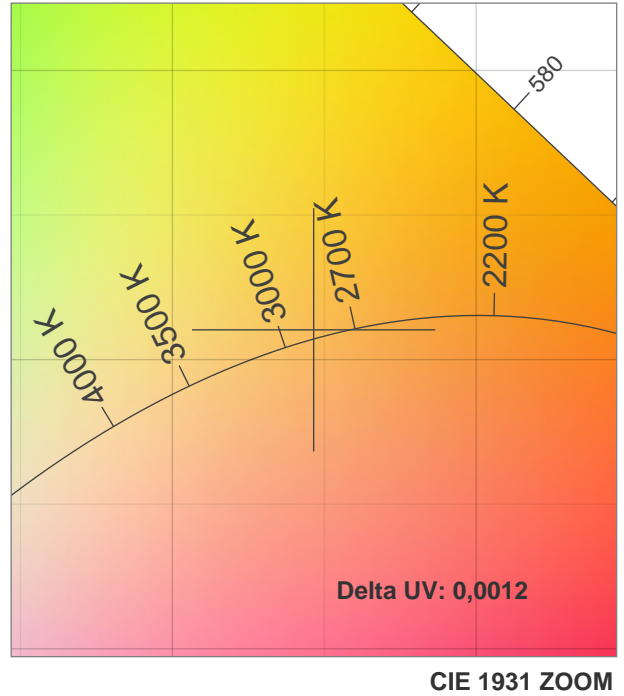
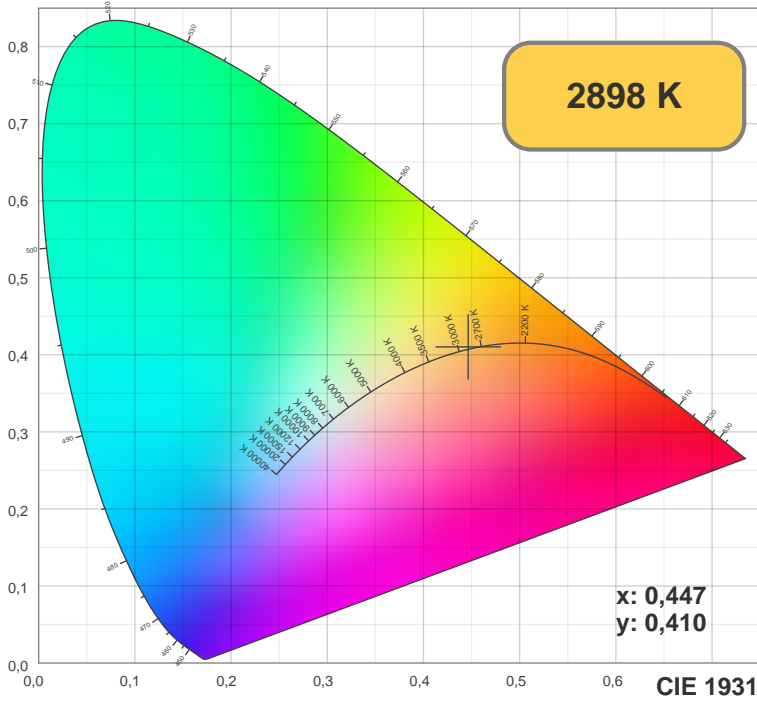


Product name:
Spotlight Pro 60 graden reflector

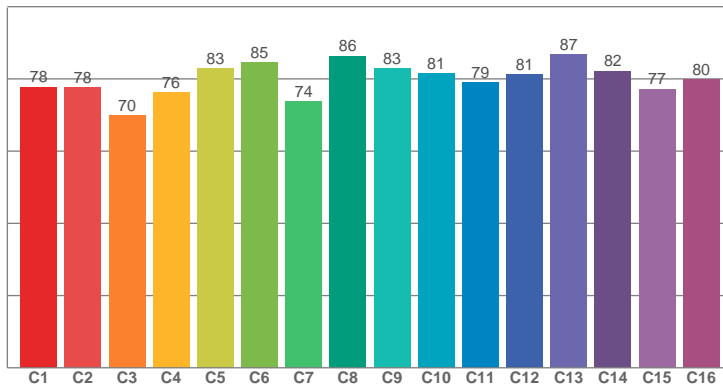
Date and time:
2-10-2020 9:11:27

Item number:
900 000351

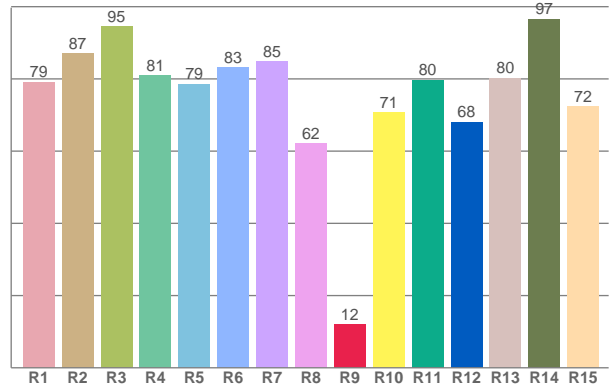
Additional information:
-XTM19803020CCA
-70mm 60 graden reflector



TM30: 79,8



CRI: 81,3 (R1-R8)



CRI R values, only R1-R8 are used to calculate final CRI value

R1	R2	R3	R4	R5	R6	R7	R8	R9	R10	R11	R12	R13	R14	R15
79,15	87,00	94,63	80,95	78,65	83,24	84,82	62,16	11,92	70,66	79,69	68,08	80,30	96,65	72,41

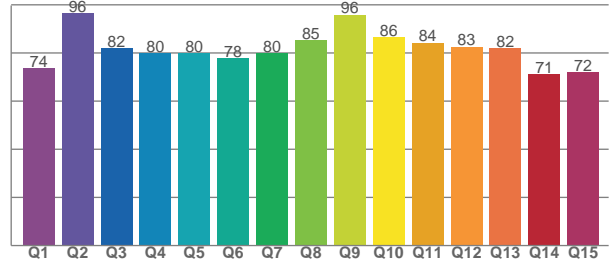
TM30 C values, 16 binned values out of total of 99 C values

C1	C2	C3	C4	C5	C6	C7	C8	C9	C10	C11	C12	C13	C14	C15	C16
77,75	77,65	69,97	76,30	82,89	84,63	73,82	86,39	82,81	81,50	78,97	81,17	86,85	82,23	77,26	79,95

CQS Q values

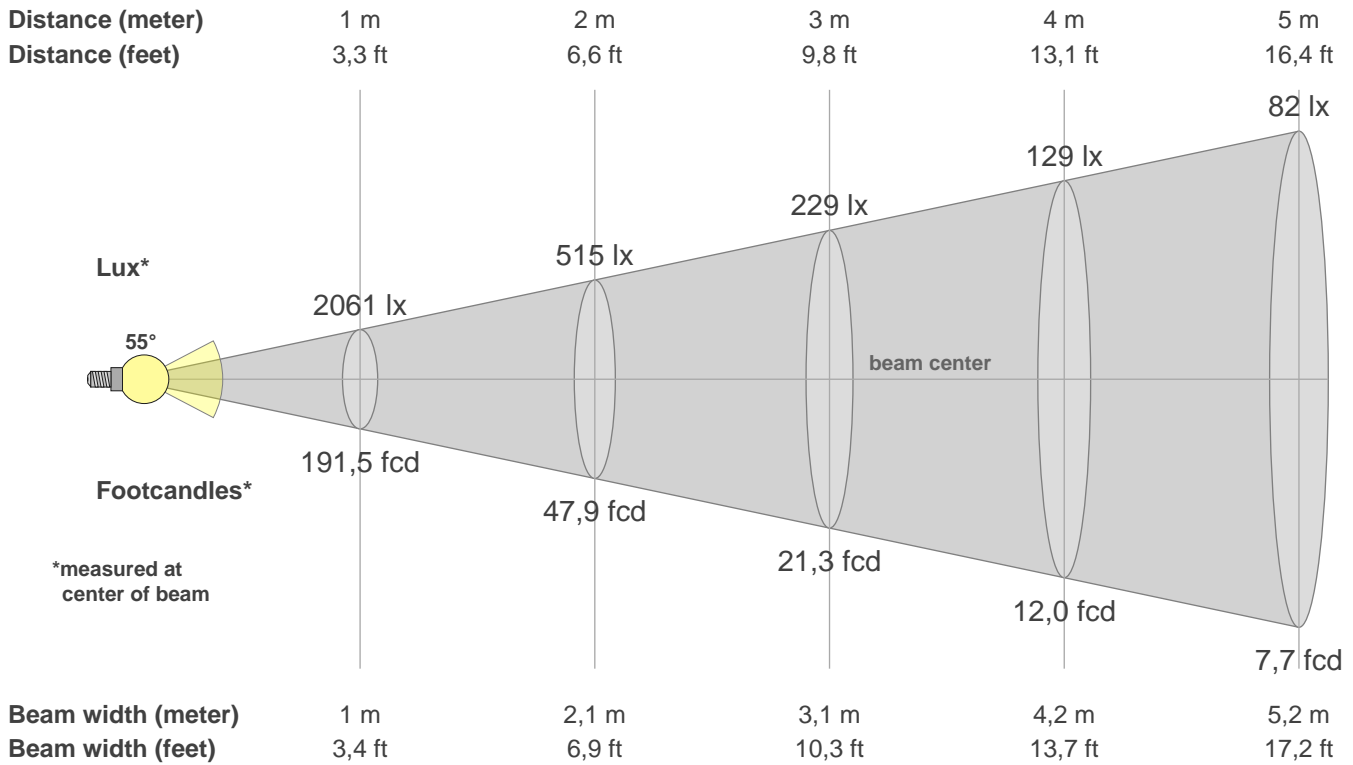
Q1	Q2	Q3	Q4	Q5	Q6	Q7	Q8	Q9	Q10	Q11	Q12	Q13	Q14	Q15
73,82	96,43	82,14	79,80	79,98	77,73	80,00	85,30	95,93	86,42	84,26	82,60	82,15	71,25	72,06

CQS: 80,5



Color parameters

CCT	CRI	CRI R9	TM30 Rf	TM30 Rg	CQS	x	y	u	v	Duv
2898 K	81,3	11,9	79,8	98,8	80,5	0,4	0,4	0,3	0,4	0,0012



Intensities in 0° c-plane

0°	2°	4°	6°	8°	10°	12°	14°	16°	18°	20°	22°	24°	26°	28°	30°	32°	34°	36°	38°
2061	2053	2035	1992	1949	1877	1800	1716	1624	1531	1432	1334	1229	1121	1015	913	811	702	592	481
100%	100%	99%	97%	95%	91%	87%	83%	79%	74%	70%	65%	60%	54%	49%	44%	39%	34%	29%	23%

Intensities in 0° c-plane

0°	2°	4°	6°	8°	10°	12°	14°	16°	18°	20°	22°	24°	26°	28°	30°	32°	34°	36°	38°
2061	2053	2035	1992	1949	1877	1800	1716	1624	1531	1432	1334	1229	1121	1015	913	811	702	592	481
100%	100%	99%	97%	95%	91%	87%	83%	79%	74%	70%	65%	60%	54%	49%	44%	39%	34%	29%	23%

Intensities in 180° c-plane

0°	2°	4°	6°	8°	10°	12°	14°	16°	18°	20°	22°	24°	26°	28°	30°	32°	34°	36°	38°
2061	2056	2032	2007	1943	1879	1799	1712	1622	1527	1431	1328	1224	1120	1014	908	799	689	569	448
100%	100%	99%	97%	94%	91%	87%	83%	79%	74%	69%	64%	59%	54%	49%	44%	39%	33%	28%	22%

Intensities in 180° c-plane

0°	2°	4°	6°	8°	10°	12°	14°	16°	18°	20°	22°	24°	26°	28°	30°	32°	34°	36°	38°
2061	2056	2032	2007	1943	1879	1799	1712	1622	1527	1431	1328	1224	1120	1014	908	799	689	569	448
100%	100%	99%	97%	94%	91%	87%	83%	79%	74%	69%	64%	59%	54%	49%	44%	39%	33%	28%	22%

Beam angle 50%	Field angle 10%	Cutoff angle 2,5%	Intensity ratio in 120° cone	Intensity ratio in 90° cone
55,3°	86,8°	96,9°	99,1%	97,1%